

# The Leeds Primary Care Paramedics scheme

## What is happening

15 General Practices across Leeds are working in partnership with Yorkshire Ambulance Service to have Specialist Paramedics provide clinical care to patients in the community. This scheme is designed to provide help to improve aspects of care provided to patients, help GP surgeries with high workload, and increase the skill level of the Paramedics involved.

## What are Paramedics?

You will be more used to seeing Paramedics arrive in ambulances when you have called 999, but they are increasingly working with General Practices around the country to provide some services on behalf of GPs. This is increasingly necessary because there are not enough GPs in the workforce, and that number continues to fall. We are working with a group of highly trained Paramedics called "Specialist Paramedics." They have done additional university training to provide a wider range of clinical care. The Paramedics will never be asked to work outside their own capabilities.

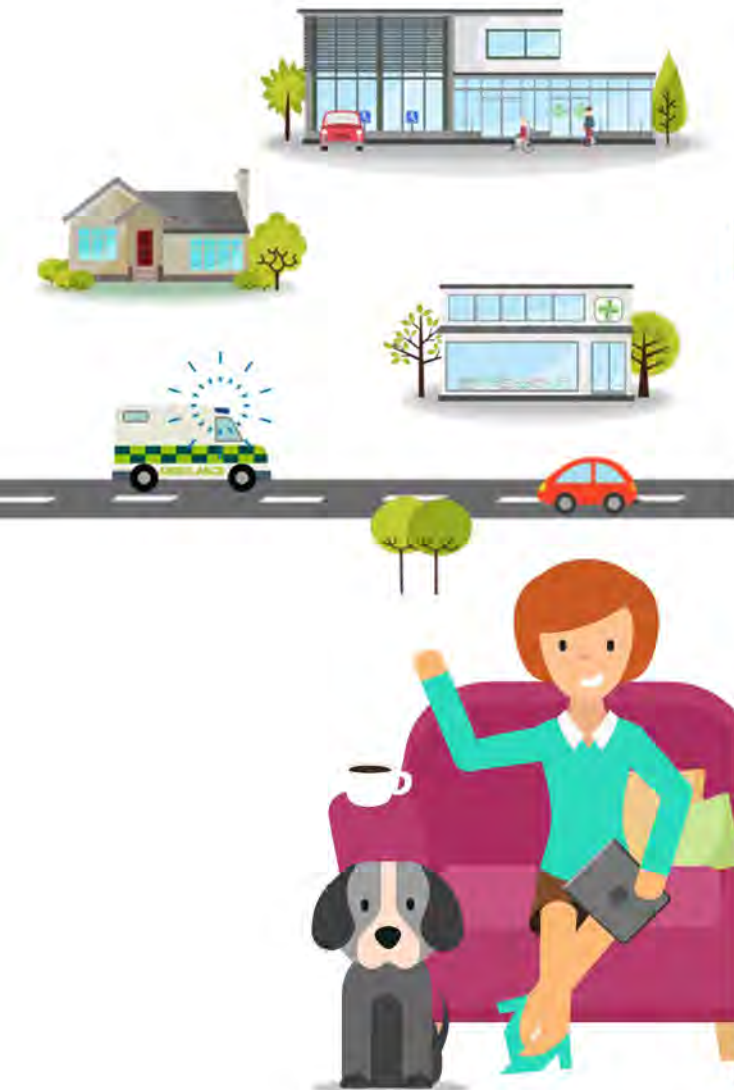
## Don't Paramedics wear green uniforms?

Yes, normally they would. However for this project they will be in plain clothes and driving unmarked cars.



## What will they be doing?

We will be working with individual Paramedics and small groups of practices to produce different models for how they will work. You can certainly expect to see them offering home visit services, and some may be doing clinics in surgeries.





## But I want a GP to visit me.

Your GP surgery will look at the reasons for your visit request and select the most appropriate team member to visit you – which could be a GP, GP in training, Nurse, Paramedic, Pharmacist or any other appropriate clinical team member. You should provide the reception staff with details of why you want to be visited in order to ensure that the most appropriate team member visits. Some surgeries will telephone you before every visit to ensure the most appropriate person is deployed. Your GP is not obliged to visit you personally, and you cannot insist on this.



**Your GP will still be working hard at the surgery, where their time can be used most efficiently.**

## What if I need more tests, or a prescription?

The Paramedic or team member who visits you will assess your condition and if they are not able to manage it independently they will discuss it with your GP. This may result in your GP issuing a prescription or arranging further tests based upon their assessment. In some rare cases you may well need a further visit from another team member or a GP – in which case this will be arranged.



## Will the Paramedic take me to hospital?

No, the Paramedic who visits you on behalf of your GP will not transport you to hospital. If you need to go to A&E the they will arrange an ambulance for you just like your GP would.

## How is the scheme being evaluated?

The project team will be doing some evaluation locally, although this is part of a national scheme which will be managed and evaluated by Health Education England. You may be asked for your consent to be used in a published case study to describe the work the Paramedics do, or you may be invited to take part in a survey to describe your experience.



## I have more questions.

You can ask questions of the GP surgeries taking part, and of the Paramedics who provide your care.